



A MESTEK COMPANY



LB2

LIGHT COMMERCIAL ENCLOSURE
FOR TO-THE-FLOOR INSTALLATIONS



A RUGGEDLY BUILT, HEAVY GAUGE AND EASY TO INSTALL BASEBOARD RADIATION SYSTEM FOR THE INSTITUTIONAL MARKET.

- **FRONTS OF HEAVY GAUGE STEEL**-16 or 18 Gauge available. (Consult factory for 14 Gauge availability.)
- **DESIRABLE CHOICE FOR HIGH DENSITY INSTITUTIONAL USE**- student dorms, military housing, nursing homes, apartment houses and the replacement market.
- **LABOR SAVING ROD HANGERS**- are suspended from prepunched slots in the full backplate. No screws or bolts to fasten.
- **NEAT-APPEARING SLIP JOINTED ENCLOSURES**- no sheet metal screws required.
- **OFF-THE-WALL BACKPLATE**- allows enclosures to be installed or removed without damage to finished wall.
- **OPTIONAL DAMPERS**- rugged commercial, fully-modulating damper assembly with durable satin finish knob operator. (Also available with TAMPER-RESISTANT socket head.)
- **ANCHOR-TYPE ACCESSORIES**- all accessories return and attach to wall at bottom of enclosure. This eliminates the need for screws while it adds rigidity to the enclosure.
- **PENCIL-PROOF LOUVERED OPENINGS**- prevents trash accumulation on element.
- **BROAD CHOICE OF ELEMENTS**- Available in both copper and steel. Wide variety of sizes and outputs. All elements completely enclosed within the enclosure.
- **DURABLE FINISH**- all enclosures are chemically phosphatized before application of baked primer or baked powder. (See Sterling Color Selector for standard finishes.)



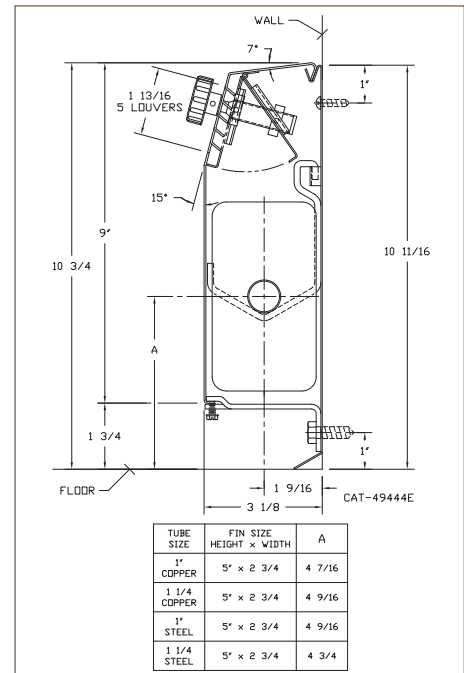
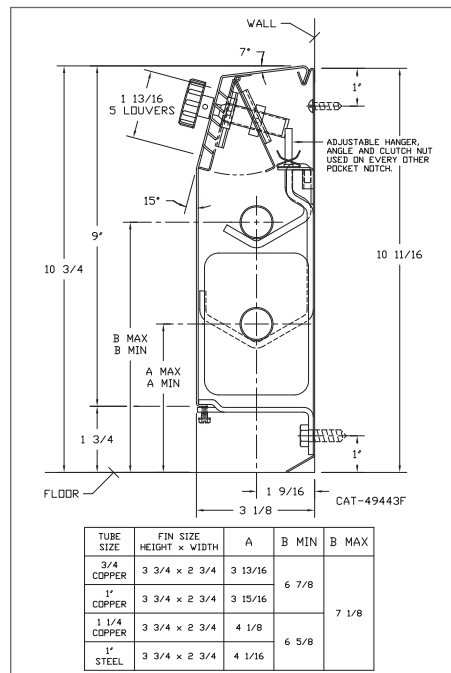
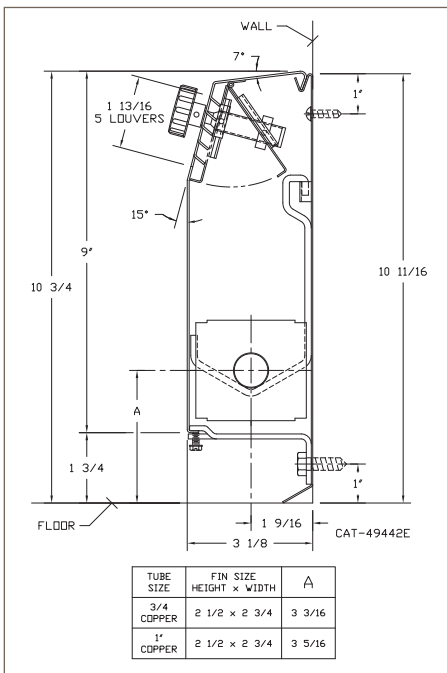
Full Backplate



Partial Backplate

All Sterling commercial hydronic products are made from recycled materials. Material recycled contents can be obtained from your local Sterling representative or by viewing the www.sterlingheat.com website. Sterling is a participating member of USGBC-LEEDS.

FULL BACKPLATE INSTALLATION



DATA CHARTS

WATER FLOW RATE CORRECTION FACTORS

| LB/HR | GPM | FACTOR | PRES. DROP-MILLINCHES/FT. COPPER ELEMENT TUBE SIZE | | |
|-------|-----|--------|--|-----|--------|
| | | | 3/4" | 1" | 1 1/4" |
| 500 | 1.0 | 1.000 | 47 | 13 | 6 |
| 750 | 1.5 | 1.016 | 96 | 26 | 12 |
| 1000 | 2.0 | 1.028 | 157 | 43 | 20 |
| 1250 | 2.5 | 1.038 | 230 | 63 | 28 |
| 1500 | 3.0 | 1.045 | 320 | 87 | 39 |
| 1750 | 3.5 | 1.051 | 420 | 114 | 50 |
| 2000 | 4.0 | 1.057 | 525 | 145 | 63 |
| 2250 | 4.5 | 1.062 | 650 | 178 | 77 |
| 2500 | 5.0 | 1.067 | 775 | 216 | 93 |
| 3000 | 6.0 | 1.074 | 1060 | 290 | 124 |

These are water ratings plus 15% for heating effect. Ratings are based on active length-active finned length is over-all length minus 4" (2" stubs). Ratings are with damper installed. The use of ratings at 4 GPM is limited to installations (usually loop) where the flow rate is 4 GPM or greater. When the flow rate is not known the standard flow rate of 1 GPM must be used.

If the calculated water flow rate through a baseboard unit in a completely designed hot water heating system is greater than the standard flow rate (500 lb./hr.), the rating of that unit may be increased by multiplying the standard water rating at 500 lb./hr. by the factor shown for the calculated flow rate. See chart for correction factors.

NOTE: NPT Threads furnished on steel elements, please use domestic fittings for their proper installation.

STYLE Light Commercial "LB-2"

| TUBE SIZE | CATALOG DESIGNATION | FIN SIZE HEIGHT X WIDTH | FIN PER FT. | FIN THICKNESS IN INCHES | WATER RATE IN GPM | HOT WATER (AVG.) | | | | | | |
|-----------|---------------------|-------------------------|-------------|-------------------------|-------------------|------------------|------------|------------|------------|------------|------------|------------|
| | | | | | | 215° | 200° | 190° | 180° | 170° | 160° | 150° |
| 3/4" | R02 | 2-1/2" x 2-3/4" | 60 | .010 | 1 | 1010 | 890 | 800 | 720 | 630 | 550 | 470 |
| | | | | | 4 | 1070 | 940 | 850 | 760 | 670 | 580 | 500 |
| 1" | R03 | 2-1/2" x 2-3/4" | 55 | .011 | 1 | 990 | 870 | 790 | 710 | 620 | 540 | 460 |
| | | | | | 4 | 1050 | 920 | 840 | 750 | 660 | 570 | 490 |
| 3/4" | R04 | 3-3/4" x 2-3/4" | 50 | .014 | 1 | 1070 | 950 | 850 | 770 | 680 | 590 | 510 |
| | | | | | 4 | 1130 | 1000 | 900 | 810 | 720 | 620 | 530 |
| 1" | R05 | 3-3/4" x 2-3/4" | 50 | .014 | 1 | 1080 | 960 | 860 | 780 | 690 | 600 | 520 |
| | | | | | 4 | 1140 | 1010 | 910 | 820 | 730 | 630 | 540 |
| 1" | R07 | 5" x 2-3/4" | 50 | .020 | 1 | 1060 | 930 | 840 | 740 | 650 | 560 | 470 |
| | | | | | 4 | 1120 | 980 | 890 | 780 | 680 | 590 | 500 |
| 1-1/4" | R08 | 2-1/2" x 2-3/4" | 50 | .020 | 1 | 1070 | 930 | 840 | 740 | 650 | 560 | 470 |
| | | | | | 4 | 1130 | 980 | 890 | 780 | 680 | 590 | 500 |
| 1-1/4" | R10 | 5" x 2-3/4" | 50 | .020 | 1 | 1080 | 940 | 840 | 750 | 660 | 560 | 470 |
| | | | | | 4 | 1140 | 990 | 890 | 790 | 690 | 590 | 500 |

NOTE: Copper/Aluminum Elements are unpainted. There is no change in output without a damper or with a damper installed in open position

► Bold, italicized units are ASHRAE CERTIFIED rated ◀

COPPER/ALUMINUM ELEMENT RATINGS

ALL RATINGS ARE BASED ON 65° EAT

STYLE Light Commercial "LB-2"

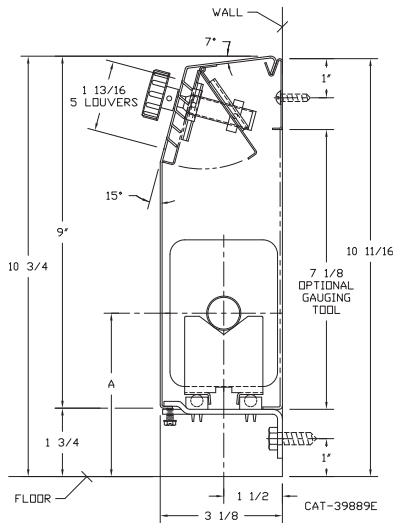
STEEL ELEMENT RATINGS

ALL RATINGS ARE BASED ON 65° EAT

| TUBE SIZE | CATALOG DESIGNATION | FIN SIZE HEIGHT X WIDTH | FIN PER FT. | FIN THICKNESS IN INCHES | WATER RATE IN GPM | HOT WATER (AVG.) | | | | | | |
|-----------|---------------------|-------------------------|-------------|-------------------------|-------------------|------------------|------|------|------|------|------|------|
| | | | | | | 215° | 200° | 190° | 180° | 170° | 160° | 150° |
| 1" | R12 | 5" x 2-3/4" | 50 | .024 | 1 | 1000 | 880 | 800 | 720 | 630 | 550 | 470 |
| | | | | | 4 | 1060 | 930 | 850 | 760 | 670 | 580 | 500 |
| 1-1/4" | R13 | 5" x 2-3/4" | 50 | .024 | 1 | 1020 | 900 | 810 | 730 | 640 | 560 | 480 |
| | | | | | 4 | 1080 | 960 | 860 | 770 | 680 | 590 | 510 |

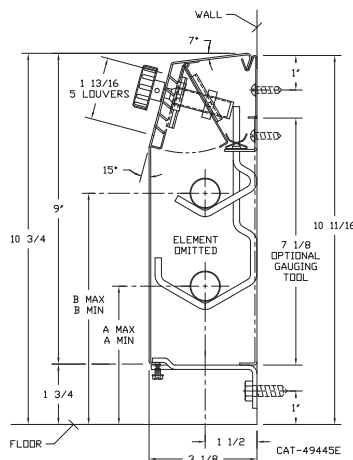
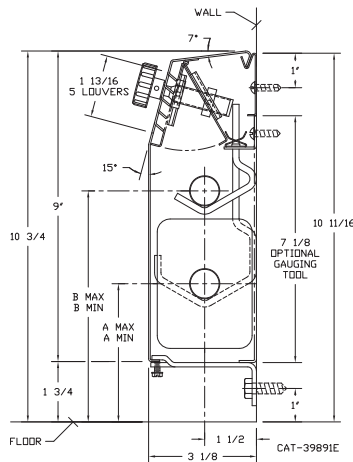
PARTIAL BACKPLATE INSTALLATION

Element Cradle with Ball Bearing Installation

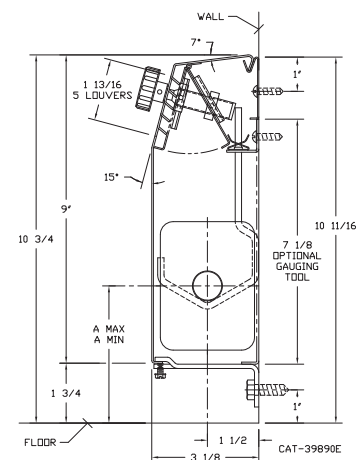


| TUBE SIZE | FIN SIZE HEIGHT x WIDTH | CRADLE NUMBER | A |
|---------------|-------------------------|---------------|---------|
| 3/4" COPPER | 2 1/2" x 2 1/4" | 1 | 3 1/2 |
| | 2 1/2" x 2 3/4" | 1 | 3 1/2 |
| | 3 3/4" x 2 3/4" | 2 | 4 3/16 |
| 1" COPPER | 2 1/2" x 2 3/4" | 1 | 3 5/8 |
| | 3 3/4" x 2 3/4" | 2 | 4 5/16 |
| | 5" x 2 3/4" | 3A | 4 3/4 |
| 1 1/4" COPPER | 3 3/4" x 2 3/4" | 2 | 4 1/2 |
| | 5" x 2 3/4" | 3A | 4 7/8 |
| 1" STEEL | 3 3/4" x 2 3/4" | 2 | 4 7/16 |
| | 5" x 2 3/4" | 3A | 4 7/8 |
| 1 1/4" STEEL | 3 3/4" x 2 3/4" | 2 | 4 11/16 |
| | 5" x 2 3/4" | 3A | 5 1/16 |

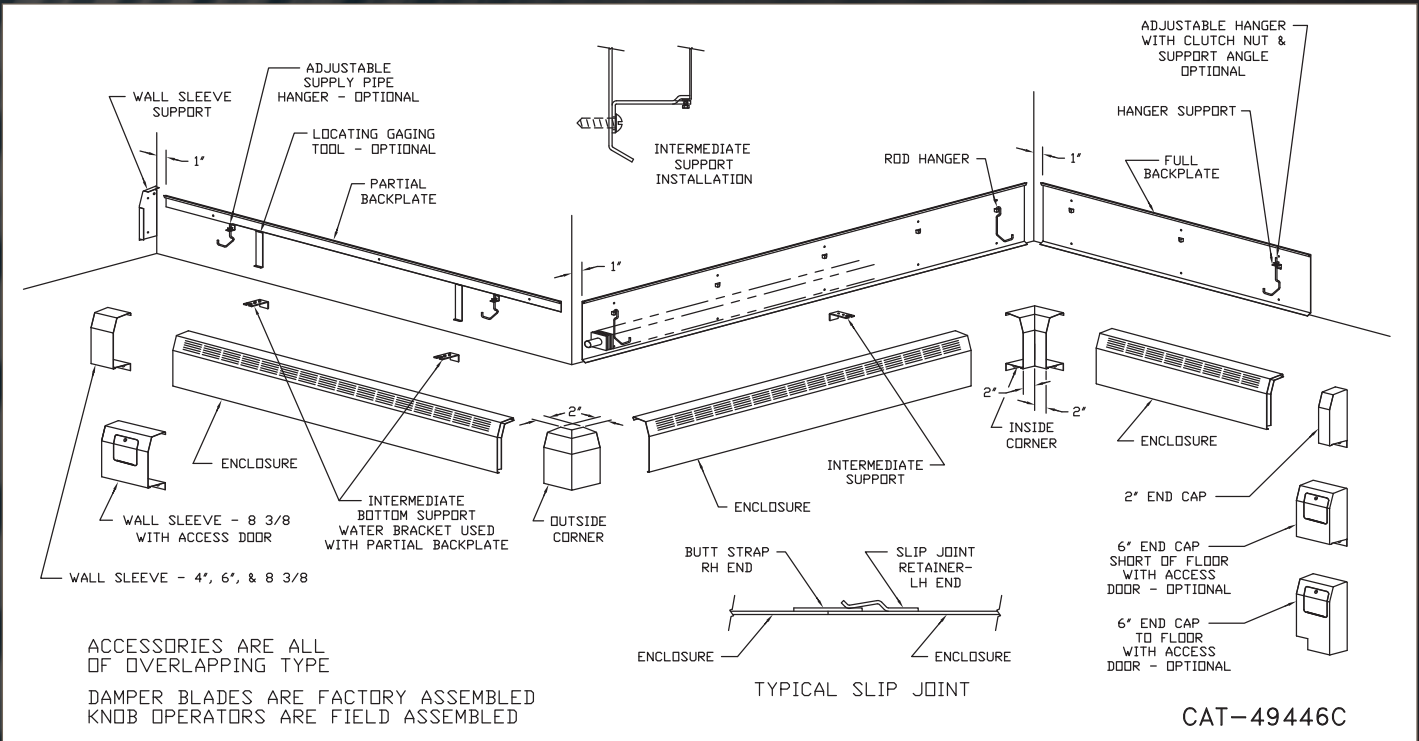
Rod Hanger Installation



| TUBE SIZE | FIN SIZE HEIGHT x WIDTH | A MIN | A MAX | B MIN | B MAX |
|---------------|-------------------------|-------|-------|-------|-------|
| 3/4" COPPER | 2 1/2" x 2 1/4" | 3 1/4 | 5 1/4 | 6 1/8 | 7 1/8 |
| | 2 1/2" x 2 3/4" | 3 7/8 | 5 3/8 | 6 5/8 | 7 1/8 |
| | 3 3/4" x 2 3/4" | 3 1/4 | 5 1/4 | 6 1/8 | 7 1/8 |
| 1" COPPER | 2 1/2" x 2 3/4" | 3 1/4 | 5 1/4 | 6 1/8 | 7 1/8 |
| | 3 3/4" x 2 3/4" | 3 7/8 | 5 3/8 | 6 5/8 | 7 1/8 |
| | 5" x 2 3/4" | 4 1/2 | 5 1/4 | N/A | N/A |
| 1 1/4" COPPER | 3 3/4" x 2 3/4" | 3 7/8 | 5 3/8 | 6 5/8 | 7 1/8 |
| 1" STEEL | 3 3/4" x 2 3/4" | 3 7/8 | 5 3/8 | N/A | N/A |
| | 5" x 2 3/4" | 4 1/2 | 5 1/4 | N/A | N/A |
| 1 1/4" STEEL | 3 3/4" x 2 3/4" | 3 7/8 | 5 3/8 | 6 5/8 | 7 1/8 |
| | 5" x 2 3/4" | 4 1/2 | 5 1/4 | N/A | N/A |



GENERAL LAYOUT



ACCESSORIES



SPECIFICATIONS

Furnish and install where shown on plans, Sterling LB2 Finned Tube Radiation as described in the following specification or approved quality and capacity equal.

Enclosure shall be one piece manufactured of 18 gauge standard (optional 16 or 14 gauge CRS) steel with pencil proof louvered discharge grille. Damper shall be fully-modulating type with satin finish knob or (optional) tamper-resistant socket head operator. Enclosures shall be joined by means of slip joint.

Full back panel (20 gauge) shall be die formed for rigidity and will have prepunched slots for rod hangers. It shall be off-the-wall type allowing for removal of enclosure without damage to finished wall. Partial back plate (20 gauge) shall be pre-painted steel and roll formed. Installations with full backplate will incorporate fixed and/or adjustable element rod hangers.

Installations with partial backplate will incorporate intermediate bottom supports with ball bearings and slide cradles when no pitch is required. Wall-mounted adjustable rod hangers will be used with partial backplate when pitch is required for steam jobs.

All accessories shall be anchor type providing additional support of enclosures.



260 North Elm Street, Westfield, MA 01085
Tel: (413) 564-5535 • Fax: (413) 562-8437
www.sterlingheat.com